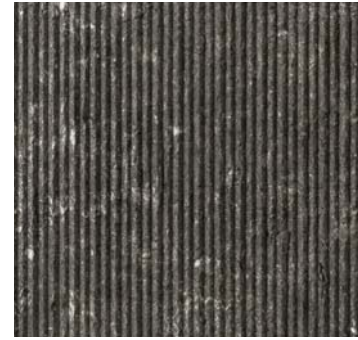




WHITE



GREY (*option with PIANO)



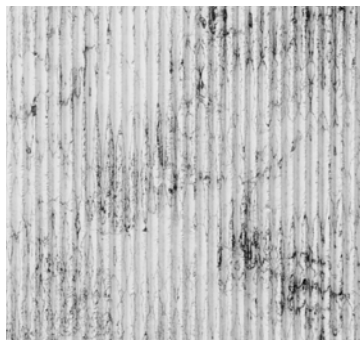
GREY WITH VEINS



BEIGE



RED



BLACK VEINS



BLUE VEINS

FORMATS AND FINISH



/ 10x10cm / 4 x 4"
 / 20x20cm / 8 x 8"
 / 30x30cm / 12 x 12"
 / 40x40cm / 15 3/4 x 15 3/4"
 / 60x60cm / 23 5/8 x 23 5/8"
 / 80x80cm / 31 1/2 x 31 1/2"



/ 60x30cm / 23 5/8 x 12"
 / 80x40cm / 31 1/2 x 15 3/4"



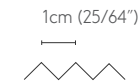
Thickness

Ruts big / 1,2cm / 15/32"
 Ruts medium & small / 1cm / 25/64"

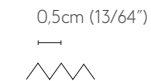
Big



Medium



Small



Finishes

H Honed

P* Polished

*on request

(* Over 1cm (25/64") of the support / wooden panel

(* The PF surfaces are supplied already onto the 10mm (25/64 ") thick wooden supports (poplar plywood, marine plywood, or metal honeycomb) with an integrated joint system through milled channels

(* Approx. weight for sq mt: 3kg (6,5lbs), plus the support

(* Water-repellent Treatment

(* Custom sizes and thickness are available upon request

TECH SPECS
EXTREMELY STRONG,
INCREDIBLY LIGHT

Contemporary “revolution” in the art of papier mâché, explores its expressive power in an unprecedented language, thanks to careful production technologies that always pay close attention to durability and energy conservation.

Remarkable lightness: an 80x80 cm panel (31 ½ ”x 31 ½”), 1 cm thick (25/64 ”), weights about 2,5 kg (5,5 lbs), plus the support.

FEATURES AND BENEFITS:

- made with non-toxic materials of neutral pH
- resistant to molds, parasites, and fungi
- colors remain stable over time
- light, solid, and durable
- easy to install with glue, screws, or hook
- water-repellant and anti-stain
- sound and thermal insulation
- easy to clean and maintain
- surface treatments fire reaction*



PARAMETER	UNIT	
STRUCTURE	–	Cellulose Panels/Mosaics
RAW MATERIALS	–	Pure Cellulose Fsc Fibre Or From Recycled Paper
THICKNESS	mm	100, 120
PANEL/MOSAICS DIMENSIONS	MPa	(As Per Paragraph “Dimensions & Thickness”)
FLEXURAL STRENGHT	MPa	3,36
THERMAL CONDUCTIVITY	L	0,122
THERMAL DIFFUSIVITY	A	0,157
BREATHABILITY	M	8,7
WATER-VAPOR PERMEABILITY	D	2,231·10(-11)
DENSITY	R	117,28
FIRE REACTION	–	Certification Pending
HACCP CERTIFICATION	–	Certification Pending
MOLD & FUNGUS RESISTANCE	–	Unattackable By Molds And Parasites
ODORS EMISSION	–	Absent

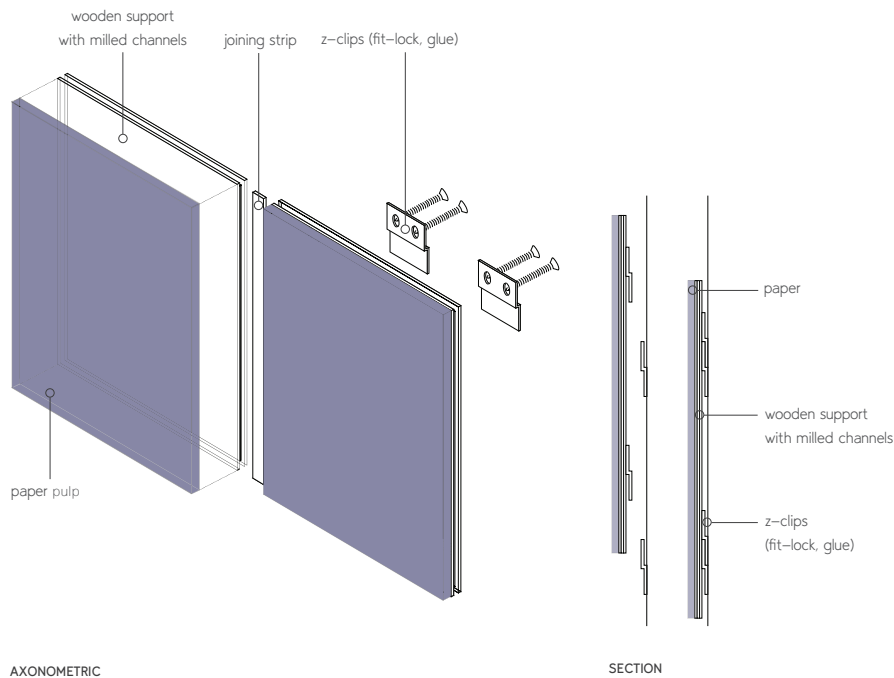
(*) In the countries that allow it, pre-certified fire-resistant coatings are applied.

(*) The Class 1 / Class A Fire-Resistance Certification and HACCP is pending.

(*) For installation in high-humidity areas, in contact with water can be applied the same products used for wood treatment.

INSTALLING – STANDARD

For application onto walls and ceilings, products are ready for interlocking assembly, guaranteeing stability and continuity among the elements with an integrated joint system on the panels, achieved through milled channels. The panels are supplied on 10mm (25/64 ") thick wooden supports (poplar plywood or marine plywood). This allows for the use of standard installation methods, such as z-clips, fit-lock, screws, and glue. The Panels do not require joints. For joints, common stucco for wood or masonry surfaces may be used, mixed with pigments to obtain the desired coloration. Upon request, the edges can be chamfered. Recommended products for installation with bonding: mapei mapesil lm, kerakoll h40 extreme, kerakoll h40 eco flex.



AXONOMETRIC

SECTION

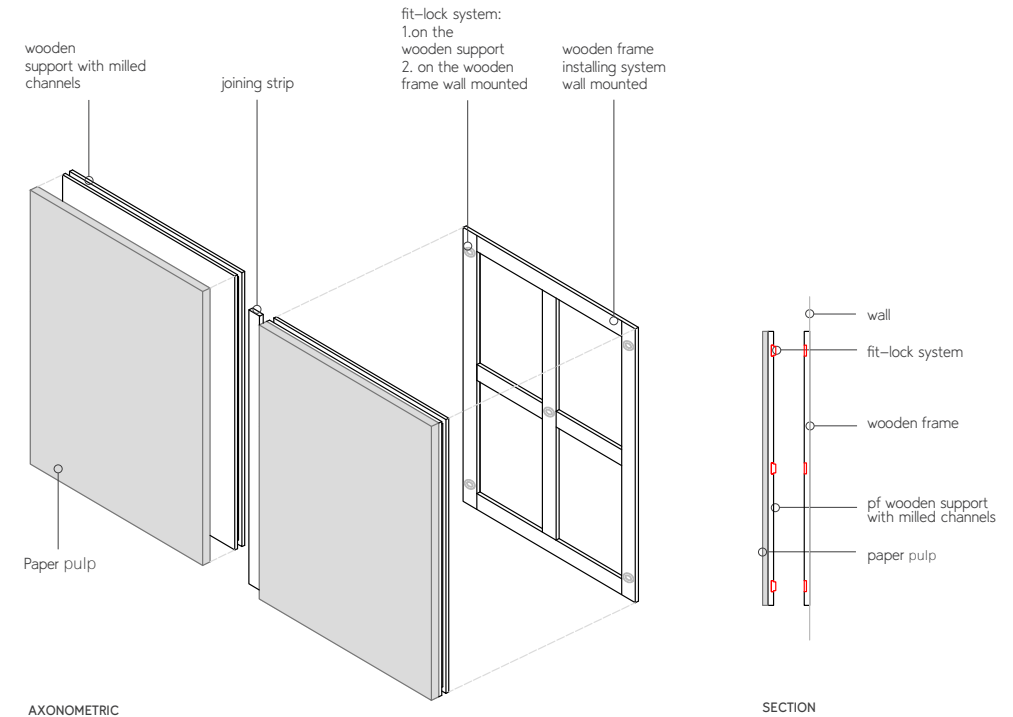
INSTALLING WITH FRAME

(OPTIONAL UPON REQUEST)

Paper allows to use standard installation methods like "fit lock system" (fitlock.com). Fitlocks are fixed on the back of the PP wooden support and on the wooden frame wall mounted. With a light pressure panel will be installed on the wall. Installing time approx. 15mins.

The panels do not require joints, unless requested.

For joints, common stucco for wood can be used, mixed with pigments to obtain the desired coloration.



AXONOMETRIC

SECTION